

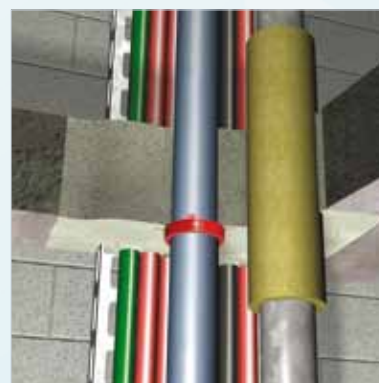
Basic Requirements for Creating a Penetration

Determine the required period of fire resistance of the element, and for loadbearing structures, ascertain the required load. The area to be sealed requires the same fire resistance as the complete floor or wall construction. In order to ensure the stability of the services is maintained under fire conditions, we recommend that all services must be adequately supported at maximum 250mm away from the wall or floor on both sides of the penetration. System fixings, impact protection and suspension elements must be steel. Monal alloys, aluminium etc are not permitted. Accessories such as guard-rails, steel angles, threaded rods. Suspension elements etc. must only be fixed to adjacent solid substrates such as concrete or masonry.



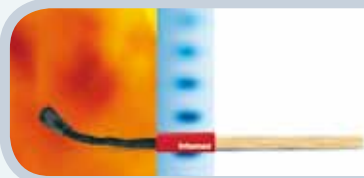
General Information

- ⇒ Cement based mortar for external use;
- ⇒ Recommended mixing ratio: mortar : water = 5 : 2;
- ⇒ Clean application tools immediately after use;
- ⇒ Intumex® V will reach its final hardness after 28 days.



Application Conditions

- ⇒ Minimum +5 °C, maximum +30 °C substrate and surrounding temperature;
- ⇒ For use within absorbent substrate, pre moisten with clean water, or use a thinned Intumex® V as primer to seal the surface and maximise adhesion.



Consumption Data (wall thickness 150 mm)

Intumex® V / Intumex® MG - Quantities in Kg dry mortar (without water!)

Opening		Cable Capacity			
Combination V/MG		10 %	20 %	30 %	40 %
0.1 m ²	Intumex® V kg	12	11	9	8
	+ Intumex® MG pcs.	0.5	1.0	1.5	2.0
0.2 m ²	Intumex® V kg	23.0	21.0	18.0	15.0
	+ Intumex® MG pcs.	1.5	2.0	3.0	4.0
0.3 m ²	Intumex® V kg	34.0	29.0	27.0	22.0
	+ Intumex® MG pcs.	1.5	3.0	4.5	6.0
0.4 m ²	Intumex® V kg	44.0	39.0	35.0	29.0
	+ Intumex® MG pcs.	2.0	4.0	6.0	8.0
0.5 m ²	Intumex® V kg	55.0	50.0	44.0	36.0
	+ Intumex® MG pcs.	2.5	5.0	7.5	10.0
0.6 m ²	Intumex® V kg	64.0	58.0	51.0	45.0
	+ Intumex® MG pcs.	3.0	6.0	9.0	12.0
0.7 m ²	Intumex® V kg	76.0	68.0	58.0	52.0
	+ Intumex® MG pcs.	3.5	7.0	11.0	15.0
0.8 m ²	Intumex® V kg	87.0	78.0	68.0	58.0
	+ Intumex® MG pcs.	4.0	8.0	12.0	16.0
0.9 m ²	Intumex® V kg	97.0	87.0	76.0	64.0
	+ Intumex® MG pcs.	4.5	9.0	13.5	18.0
1.0 m ²	Intumex® V kg	109.0	96.0	85.0	73.0
	+ Intumex® MG pcs.	5.0	10.0	15.0	20.0

Installation: wall and floor condition

- ⇒ Clean opening with water;
- ⇒ Prepare the opening by priming with Intumex® V;
- ⇒ Apply Intumex® MG for cables and cable bundles;
- ⇒ Where necessary fix shuttering;
- ⇒ Close remaining opening with Intumex® V;
- ⇒ Smoothen the surface;
- ⇒ Fix identification label.

For additional information on how and where to use this product please refer to our systems database www.intumex.info, or visit our website at <http://www.intumex.at>